

StormPro 361™ Installation - Single

The purpose of these installation instructions is to describe and illustrate how this product should be used to obtain the desired results of providing a secure door unit in severe weather. The use of this document is not to describe how to completely hang a door unit but to show items specific to the StormPro 361. The primary intent of the StormPro 361 is to be used as a component in community shelters as described in FEMA 361 (Design and Construction Guidance for Community Shelters).

- 1) The StormPro 361 was designed for a concrete masonry unit wall (cmu) section and eight (8) masonry tee anchors have been supplied. A masonry tee (MT534) shall be applied at the 1st, 4th, 7th, and 10th course of the wall on the strike and hinge jamb of the frame unit (see figure 1). The masonry tee may be bent down into the block to allow room for rebar (see figure 2). The walls should be constructed in accordance to FEMA 361.
- 2) The strike jamb, hinge jamb and head shall be grouted. (See figures 1 & 2)

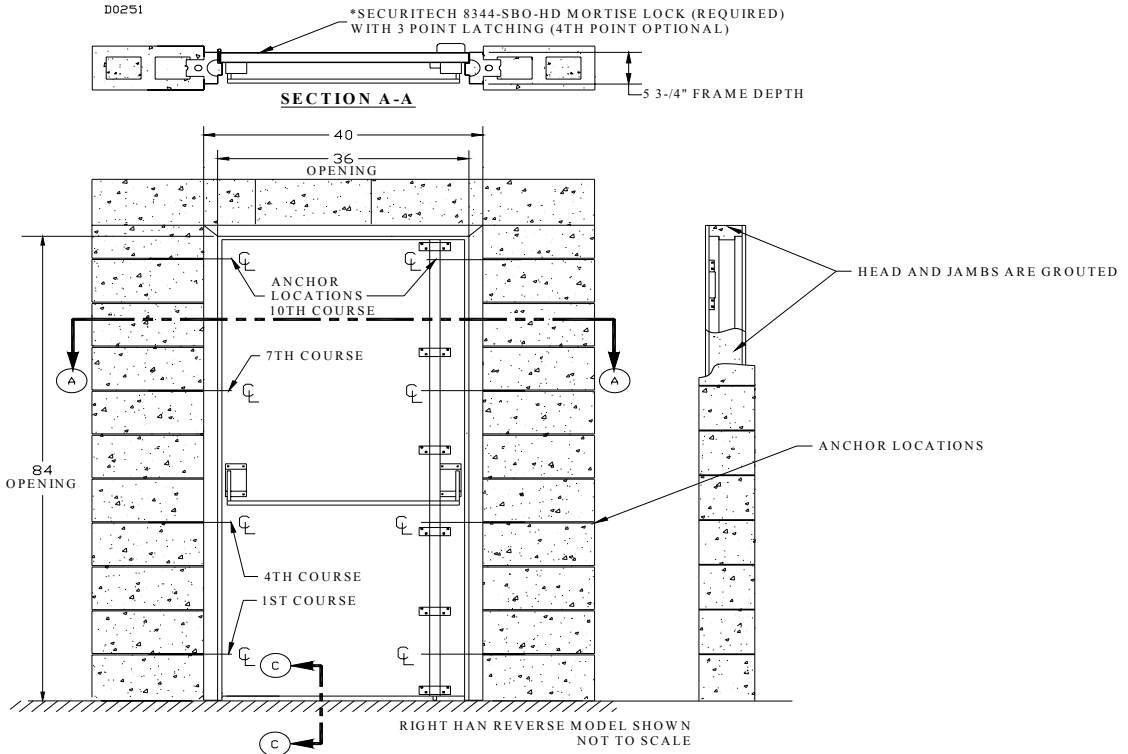


Figure 1

* SECURITECH 83L44 (LEVER), 83T44 (TOUCHBAR) OR 83C44 (CROSSBAR) MAY BE USED!

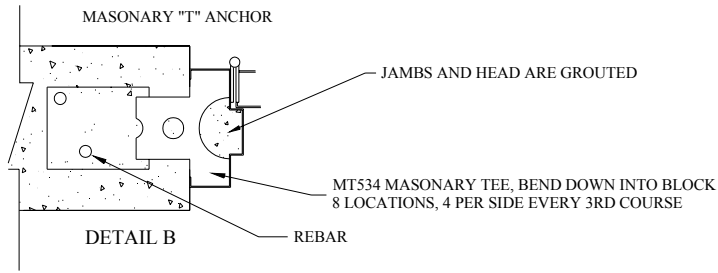


Figure 2

- 3) The door shall be installed in an out-swing condition. The door shall be installed with three (3) 4.5" x 4.5" x .180 heavy weight hinges.

The doors are supplied with a 3/8" undercut. The 3/8" undercut is between the concrete floor and the bottom of the door. When the installation is finished a maximum of 1/4" is allowed between the bottom of the door and the finished floor. The maximum 1/4" gap is needed to provide the proper bolt engagement for the lock. This may be achieved in several ways. Two possible options would be with a low profile saddle type threshold (see figure 3) or using a tile on top of the concrete floor with no threshold (see figure 4).

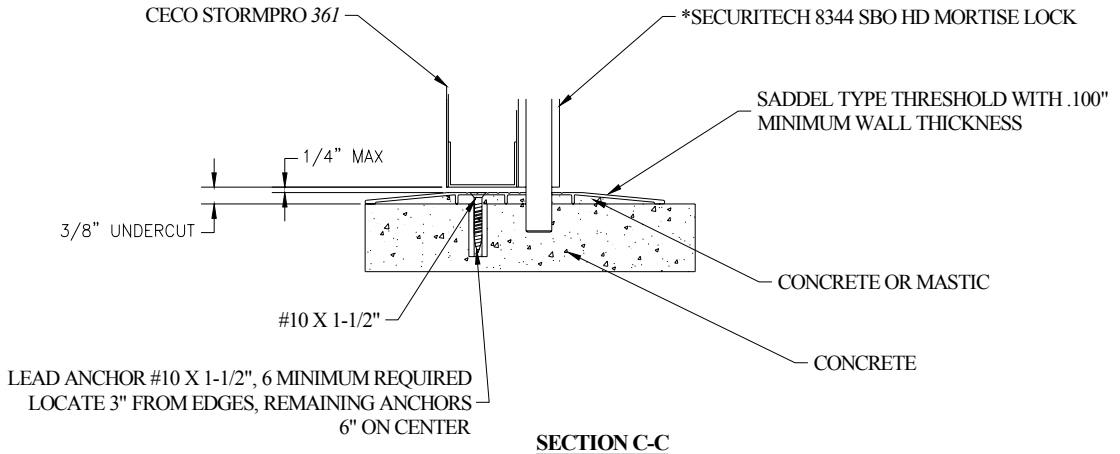
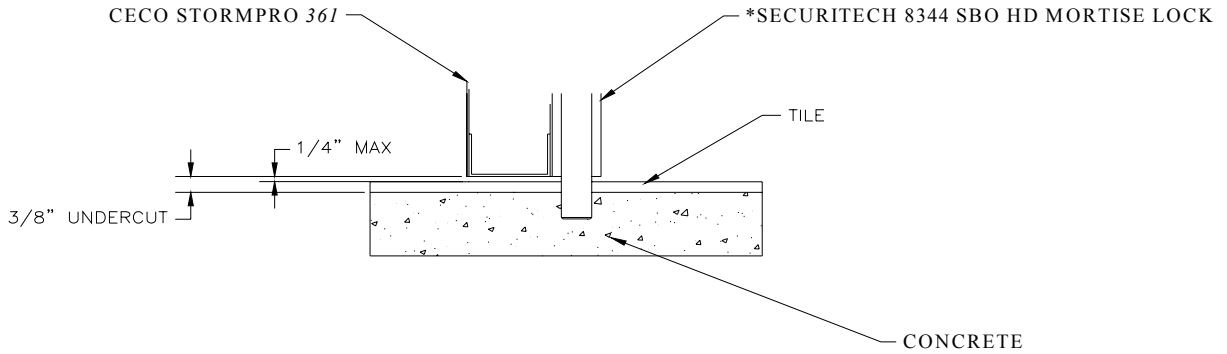


Figure 3

*** SECURITECH 83L44 (LEVER), 83T44 (TOUCHBAR) OR 83C44 (CROSSBAR) MAY BE USED!**



SECTION C-C

Figure 4

- 4) The door and the lock are an integrated unit. Install the Securitech *8344-SBO-HD361 in accordance to the installation instructions provided by the lock manufacturer.

Holes will be needed in the floor and head to receive the bolts of the lock. It is recommended for alignment purposes that the holes be drilled after the unit has been set in place. Check where the bolts will engage the floor and the head. Drill the holes for the vertical bolts in accordance to the lock manufacturers instructions.

*** SECURITECH 83L44 (LEVER), 83T44 (TOUCHBAR) OR 83C44 (CROSSBAR) MAY BE USED!**